



COMPARING ABATACEPT TO ADALIMUMAB, ETANERCEPT AND INFlixIMAB AS FIRST LINE AGENTS IN PATIENTS WITH RHEUMATOID ARTHRITIS. EXPERIENCE FROM THE PROVINCIAL ELECTRONIC DATABASE AND REGISTRY RHUMADATA®

D. Choquette¹, L. Bessette², I. Fortin³, B. Haraoui¹, F. Massicotte¹, J.-P. Pelletier¹, J.-P. Raynauld¹, M.A. Rémillard¹, D. Sauvageau¹, E. Villeneuve¹, and L. Coupal¹
¹Institut de rhumatologie de Montréal (IRM), ²Centre d'ostéoporose et de rhumatologie de Québec (CORQ), ³Centre de rhumatologie de l'est du Québec (CREQ)

INTRODUCTION

The order of use of biologic agents is still a question for debate. Phase III trial data in MTX-IR patients show comparable efficacy results across biologic agents and limited head-to-head studies have been published. Registries offer a unique opportunity to prospectively monitor the effectiveness of these agents in a clinical setting.

OBJECTIVES

To assess if patients with rheumatoid arthritis (RA) treated with abatacept after failure of a first line agent (MTX-IR) have a different drug survival rate than patients similarly treated with adalimumab, etanercept or infliximab.

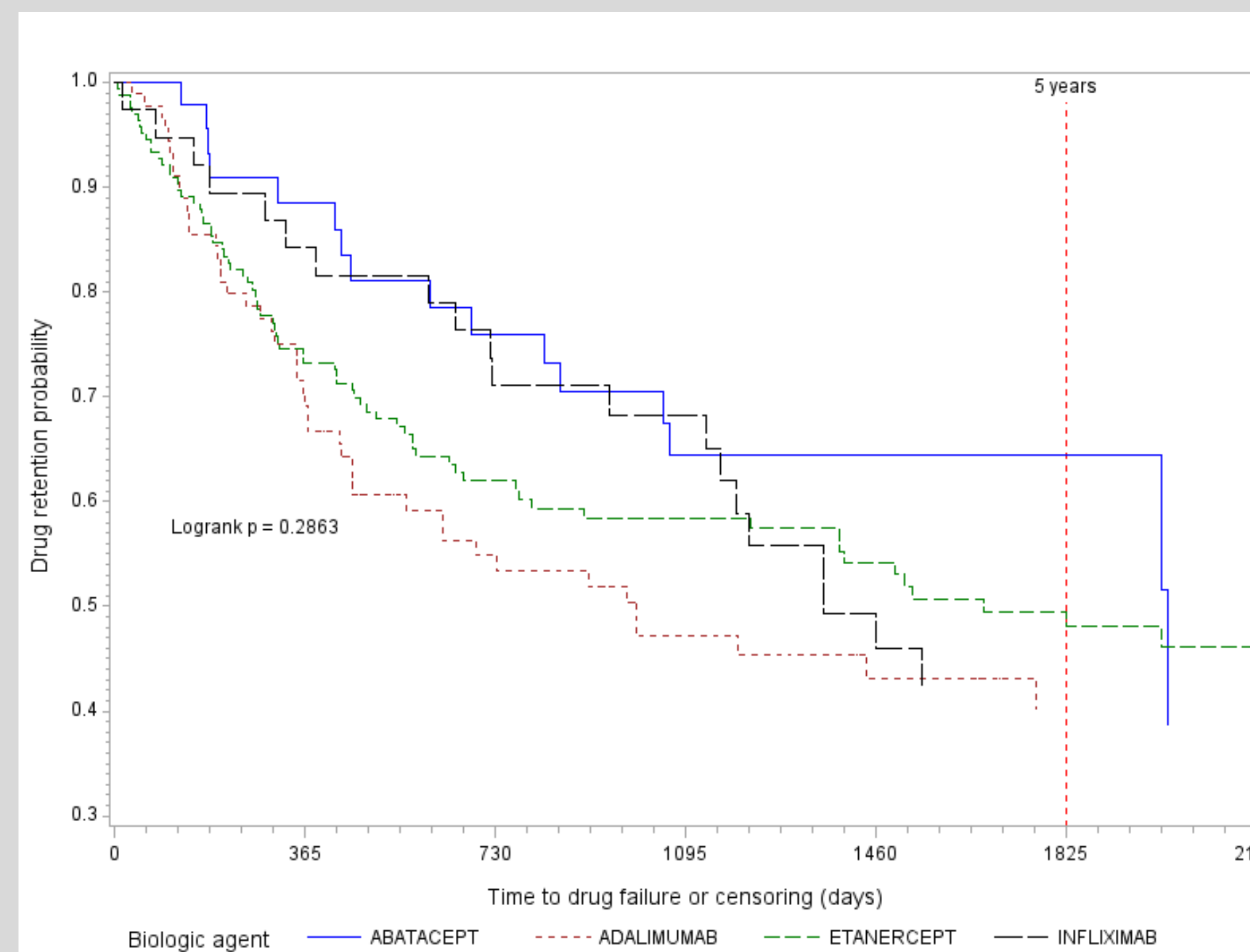
METHODS

RA patients prescribed a first biologic agent after January 1st 2007 were included in the present analysis. We extracted a cohort formed of all patients prescribed abatacept (ABA), adalimumab (ADA), etanercept (ETA) or infliximab (INF) as their first biologic agent. Baseline demographics for this cohort included age, disease duration, HAQ-DI, fatigue and pain visual analog scale evaluation (VAS), TJC, SJC, DAS 28 ESR, CDAI and SDAI. Person-years of treatment were also compared across biologic agents. Statistical analysis was performed using SAS version 9.3. RHUMADATA® is a clinical database and registry used daily in clinical practice at the IRM, CORQ and CREQ.

SELECTED BASELINE CHARACTERISTICS

	First biologic agent					ALL
	ABA	ADA	ETA	INF	p	
N	50	91	168	38		347
Mean Age (years)*	58.3 (12.1)	53.2 (14.4)	53.8 (14.6)	53.3 (13.5)	ns	54.2 (14.2)
% Women	86.0%	85.7%	79.8%	76.3%	ns	81.8%
Disease duration (years)	6.7 (7.2)	6.9 (9.5)	8.7 (9.2)	6.6 (7.9)	ns	7.7 (8.9)
HAQ-Score	1.3 (0.6)	1.3 (0.6)	1.2 (0.6)	1.4 (0.4)	ns	1.3 (0.6)
CRP [mg/L]	16.9 (24.0)	13.0 (20.4)	12.5 (17.8)	9.1 (5.5)	ns	12.7 (18.3)
ESR [mm/hr]	24.1 (19.2)	23.3 (17.2)	24.8 (22.2)	20.8 (14.7)	ns	23.9 (19.7)
RF+	44.0%	46.2%	44.6%	57.9%	ns	46.4%
Anti-CCP+	24.0%	36.3%	25.6%	34.2%	ns	29.1%
DAS28-4(ESR)	4.1 (0.9)	4.0 (1.5)	4.1 (1.2)	4.5 (1.3)	ns	4.1 (1.3)
CDAI	23.5 (12.5)	26.6 (14.7)	21.7 (12.0)	29.1 (13.9)	s	24.4 (13.3)

* Data are presented as means (SD), unless stated otherwise.



RESULTS

A total 347 patients were included in the cohort. No clinically significant differences in baseline characteristics were noted between treatment groups. The 5 year retention rate of ABA, ADA, ETA and INF post MTX failure were 64%, 40%, 49% and 42% without significant statistical differences (Log-Rank p=0.29).

CONCLUSIONS

Abatacept, adalimumab, etanercept and infliximab after MTX failure have similar 5-years retention rates.

Supported by unrestricted grant from Abbvie Canada, Amgen Canada, BMS Canada, Celgene Canada, Janssen Canada, Pfizer Canada, Roche Canada
 Disclosure of interest: None declared

CONTACT

Denis Choquette MD
 Institut de Rhumatologie de Montréal
 1551, Ontario Street East
 Montreal, Canada
 denis.choquette.irm@videotron.ca

